

Workforce Focus

From the Elgin, Middlesex, Oxford, Local Training Board.

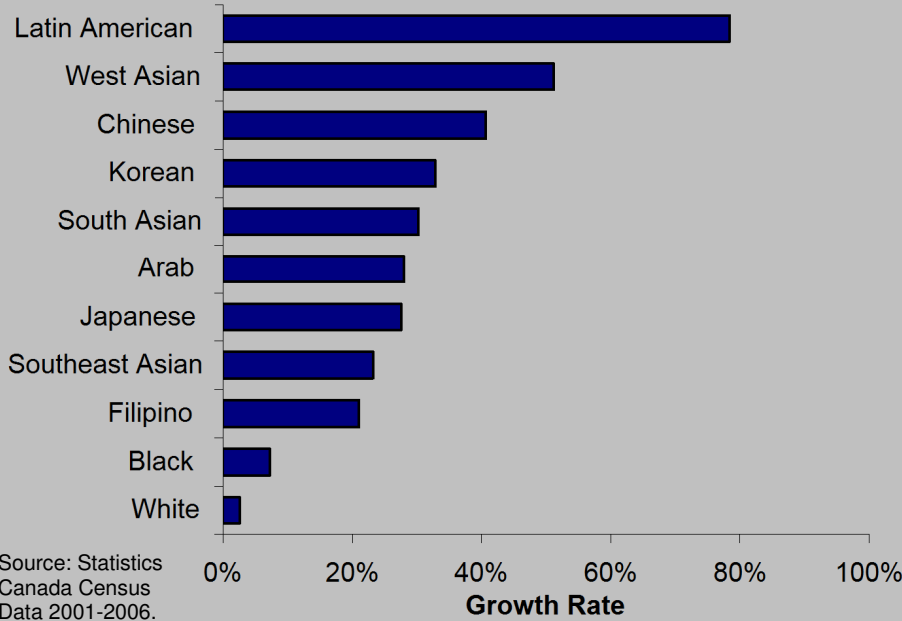
In this Issue:

Population

- Demographics
- Growth Rates
- Population Groups

Growth Rates By Population Group

Elgin-Middlesex-Oxford, 2001-2006

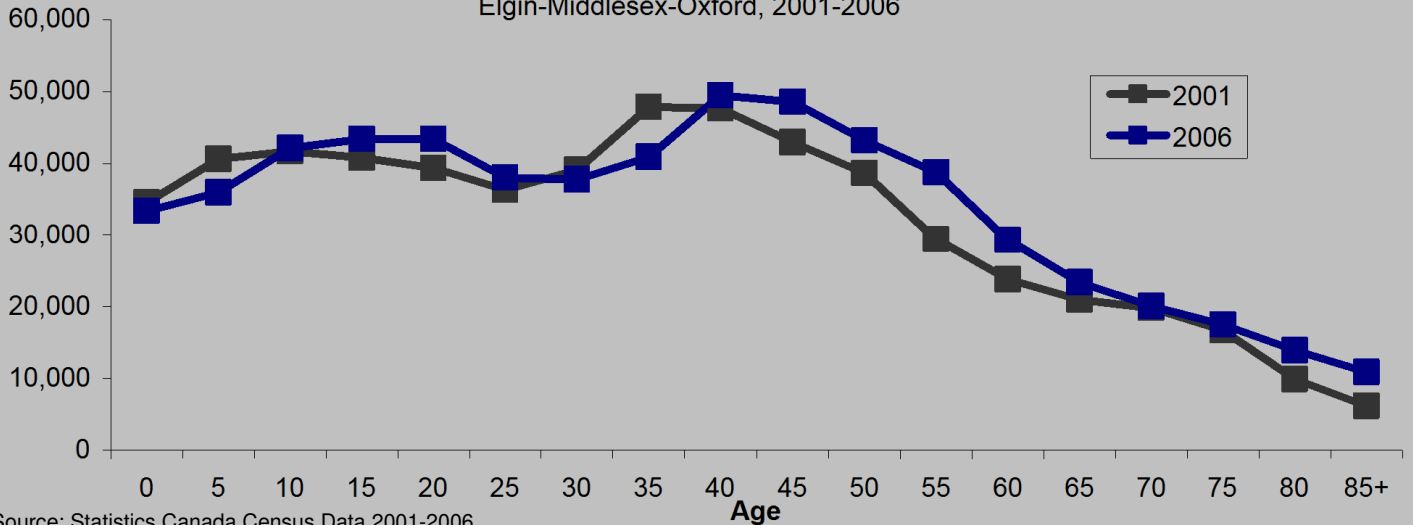


Expanding Minorities

Although this region remains over 90% white, most visible minority population groups are growing at a much faster rate than average. Visible minorities collectively grew at 31% while the total population grew by 5%. Leading visible minority groups in growth was the Latin American community which grew from 4,600 to 8,205 from 2001 to 2006. Over 60% of this growth was a result of Latin American immigration to Middlesex County. The second largest population growth was Chinese, who increased by 1,990 people during this period. Though visible minority immigration has increased, there is still more immigration to this region by whites than by any single visible minority group.

Demographic Shift

Elgin-Middlesex-Oxford, 2001-2006



Aging Population

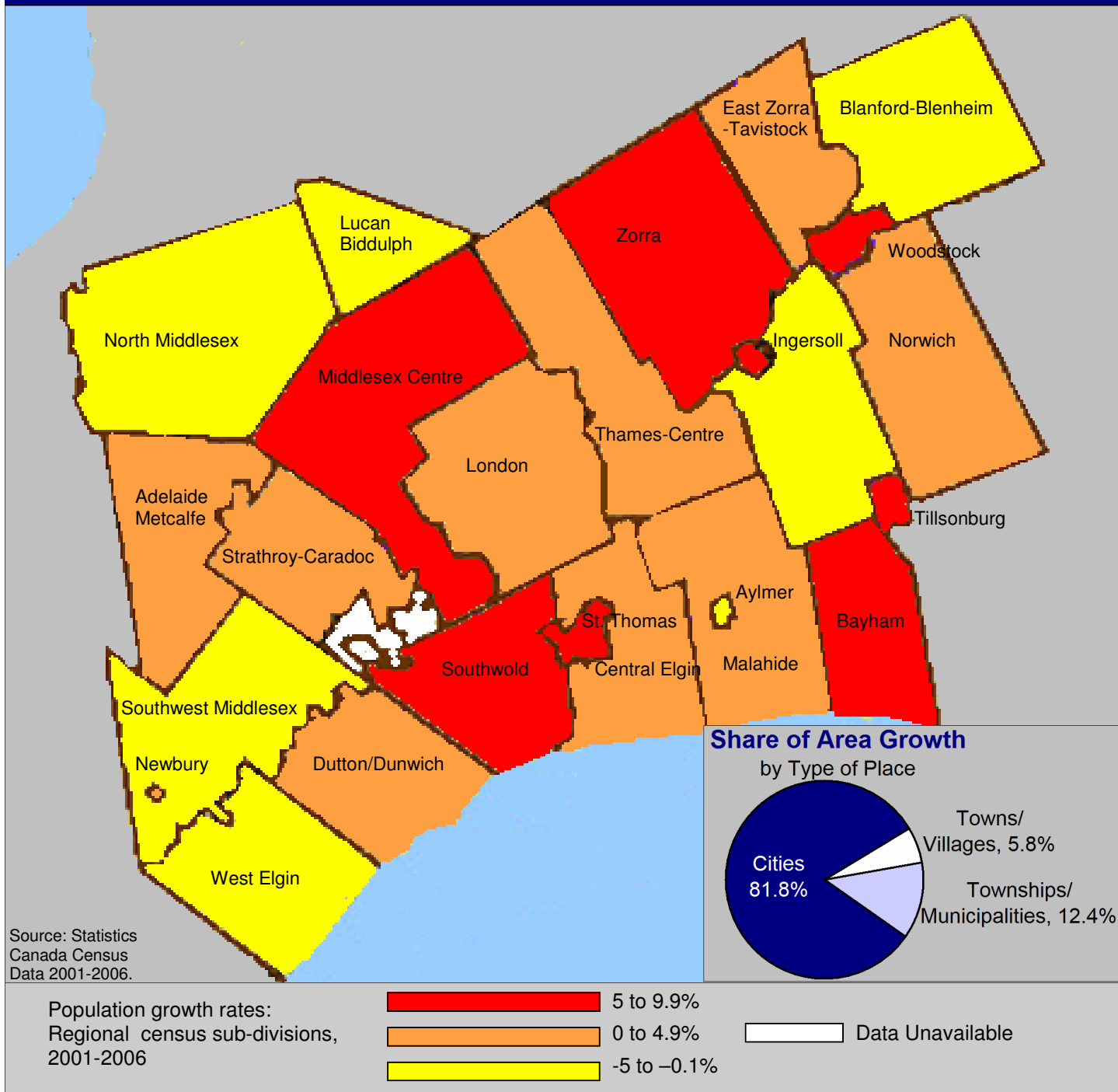
This region is collectively getting older as the boom-bust-echo pattern continues to shift with time. There are now more 10 to 20 year-olds, but less children under 10. There are now more people in nearly every age group past age 40.



For more information please contact The Local Training Board at:
705 Consortium Court, London ON N6E 2S8 (519) 672-3499 info@localboard.on.ca

Created by : Dane Rice

Population Growth Rates



Spotted Growth

This area's cities have accounted for the vast majority of the population growth. Collectively they grew at 5.2% between 2001 and 2006. Leading this growth was St. Thomas at 8.4% and Woodstock at 6.6%. Townships and municipalities collectively grew at 2.1%. Leading all area growth rates was Middlesex Centre at 9.5%. Area towns and villages grew at 4.5%. Ingersoll grew faster than average at 7.1%.

SEE MORE LABOUR MARKET INFORMATION ON THE WEB AT
WWW.LOCALBOARD.ON.CA

**EMPLOYMENT
ONTARIO**

THE VIEWS EXPRESSED IN THIS DOCUMENT DO NOT NECESSARILY REFLECT THOSE OF
THE GOVERNMENT OF ONTARIO.